
Leela Palaces, Hotels and Resorts

The Leela Palace Bengaluru

Presented By:

Baljit Singh- Head, Operations (PAN INDIA)

Mukesh Chandra- Assistant Vice President

Srijit Mukherjee-General Manager

The Building

A 357 keys Luxury hotel rooms at the heart of Bengaluru. The hotels architecture is inspired by the Mysore palace.

- ❖ The hotel was designed by WATG (Wimberly Allison Tong & Goo)
- ❖ Interiors were designed by Hirsch Bender Associates New wing - KNA Design
- ❖ Landscape was designed by Kishore Pradhan



ROOMS CATEGORY

- ❖ Guest rooms 357 (Two Blocks 252 built in 2001 and 105 rooms built in 2007)
 - ❖ 215 Deluxe rooms
 - ❖ 20 Conservatory rooms
 - ❖ 49 Royal Premier rooms
 - ❖ 44 Royal Club rooms
 - ❖ 1 Maharaja Suite
 - ❖ 5 Royal Club suites
 - ❖ 5 Tower suites
 - ❖ 8 Turret suites
 - ❖ 2 Royal suites
 - ❖ 8 Executive suites



The Leela Palace Bengaluru – Food and Beverage

The Leela Palace Bengaluru is home to four restaurants and bars, offering guests a series of legendary dining experiences

- ❖ A signature dining experience at our award winning Le Cirque Signature where the exhaustive Franco-Italian menu and ambience creates a mesmerizing culinary event
- ❖ Jamavar-the most iconic Indian restaurant is all about bringing authentic Indian flavor/ recipes to your table.
- ❖ Our all day dining restaurant has a plethora of cuisines that will leave you spoilt for choice. Nutritious and filling breakfast or a team lunch/dinner, Citrus has it all.
- ❖ Perfecting the art of Asian cuisines, Zen presents an exotic Pan Asian culinary in Bengaluru where patrons get a chance to experience the flavors of Asia through subtle seasonings, aromas and textures.



The Leela Palace Bengaluru – Function and Meeting Space

Sl.no	Venue	Area in Sq ft
1	Grand Ballroom	4400
2	Grand Ballroom Prefunction Area	2429
3	Royal Ballroom	2700
4	Royal Ballroom Prefunction Area	1568
5	Turret Boardroom	768
6	Kamal	784
7	Sitara	756
8	Nidhi	644
9	Yatra	460

Sl.no	Venue	Area in Sq ft
10	Diya	891
11	Diya Terrace	1652
12	Surya	392
13	Surya Terrace	1520
14	Maya	280
15	Royal Club Boardroom	700
16	Nithya	840
17	Roshini	406
18	Dhwani	377

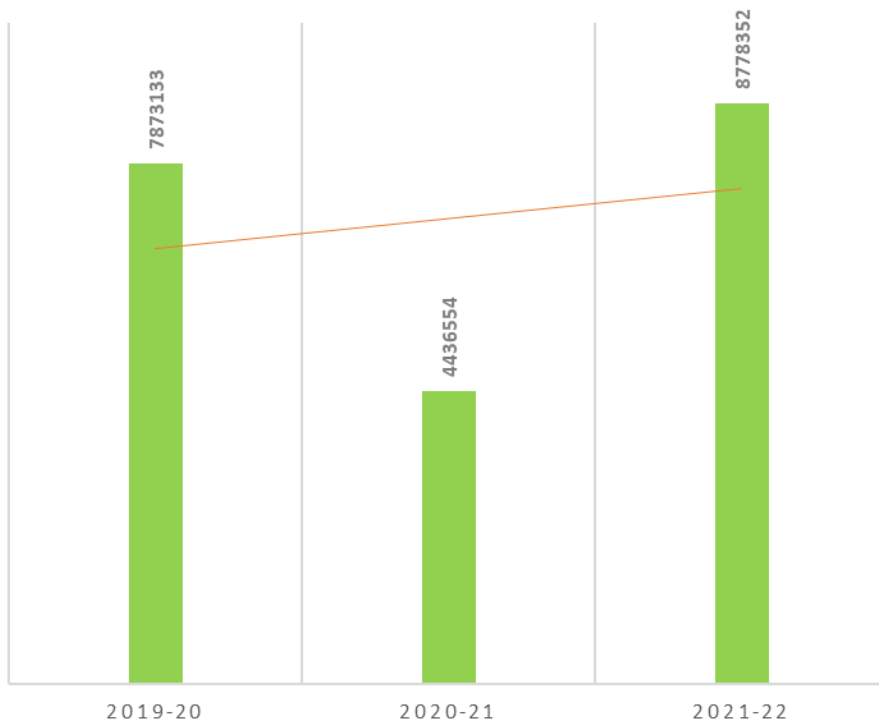


TLPB: Area detail (Hotel area is taken from the multipurpose building)

- ❖ Plot area – 28429 Sq.Mtrs
- ❖ Built up area – 72554 Sq.Mtrs
- ❖ Building 3 basements, G and 7 floors
- ❖ Ground Coverage area: 8269 Sq. Mtrs
- ❖ Hard paved area -9944 Sq.Mtrs
- ❖ Soft green area 7075 [Sq.Mtr](#)
- ❖ Terrace area 5275 [Sq.Mtr](#)
- ❖ Power sanctioned – 2500 KVA,
- ❖ MD recorded: 1950 KVA
- ❖ Windmills 1.25 MW X 4 = 5 MW captive use (annual generation 85 LKWH)

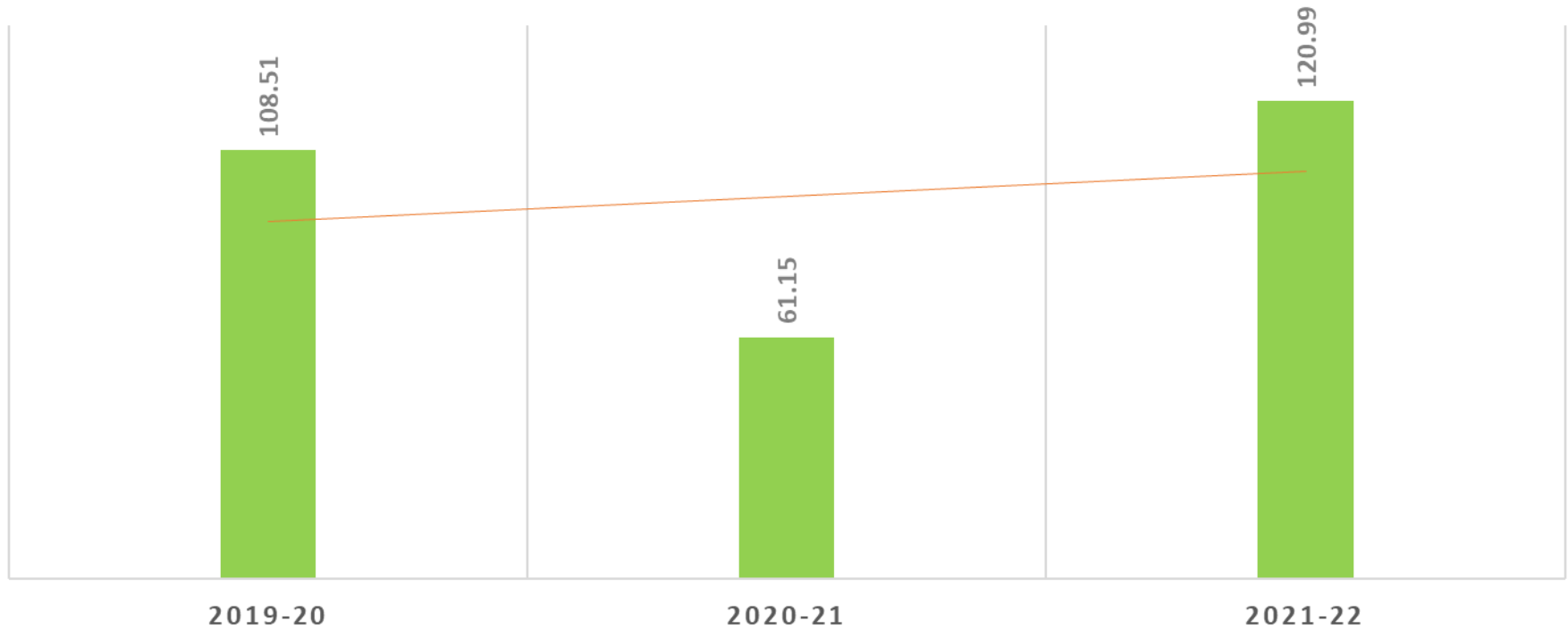
Energy Consumption Pattern

TOTAL ENERGY CONSUMPTION, KWH



S. No.	Parameter	Unit	2021-22	2020-21	2019-2020
1	Energy				
a	Annual Electrical Energy, purchased from Utility	Lacs kWh	87.15 (Wind)	44.00	78.04
b	Annual Electrical Energy, Generated from DG/GG	Lacs kWh	0.64	0.36	0.68
c	Total Annual Energy, Utility + Generated	Lacs kWh	87.78	44.36	78.73
2	Energy Cost				
a	Annual Cost of Electrical Energy, purchased from Utility	Million Rs.	8.72	4.40	51.9
b	Annual Cost of Electrical Energy, Generated from DG/GG	Million Rs.	1.10	0.040	0.32
c	Total Annual Cost of Energy Cost, Utility + Generated	Million Rs.	9.82	4.44	52.2

SPECIFIC ENERGY CONSUMPTION, KWH/SQ. M/YEAR



Note: In 2020-21 because of covid impact, the occupancy level has got reduced and which is increasing in 2021-22.

Encon Projects Planned in FY(2022-23)

Title of Project	Estimated Energy Saving, kWh	Cost Saving, Lacs Rs.	Investment, Lacs Rs.	Payback, In Months
Rooftop Solar Panel	1420000	142.00	400.00	34
Heat Pumps	50000	5.00	10.00	24
Upgradation of BMS System	92500	9.25	16.00	21
Inefficient Chiller Replacement with Highly Efficient Magnetic Bearing Chiller	216000	21.6	65.2	36
Total	1778500	177.85	491.2	33

Encon Projects

Year	No. of Energy Saving Projects	Investment, Lacs Rs.	Impact on SEC, %
FY (2019-20)	1	30.8	4.10%
FY (2020-21)	3	24.50	3.70%
FY (2021-22)	4	631.60	14.20%

Hotel power utilized from BESCOM

Hotel wind energy generated units

7548750 KWH



8714655 KWH



Energy produced than utilized

Windmills

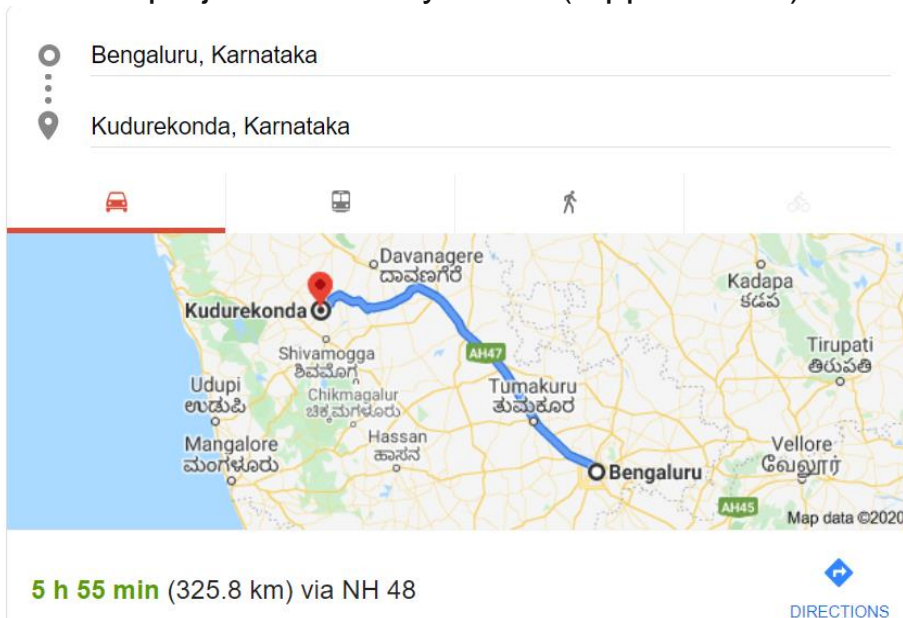
- Suzlon windmills located in Kudrekonda, Davanagerre district. Karnataka, 350 KM from Bangalore
- Total Capacity is 5 MW.
- K 534 – 1.25 MW
- K535 – 1.25 MW
- K536 – 1.25 MW
- K537 – 1.25 MW
- The project cost today 30 Cr. (Approximate)

Financial year	Energy generated in KWH
----------------	-------------------------

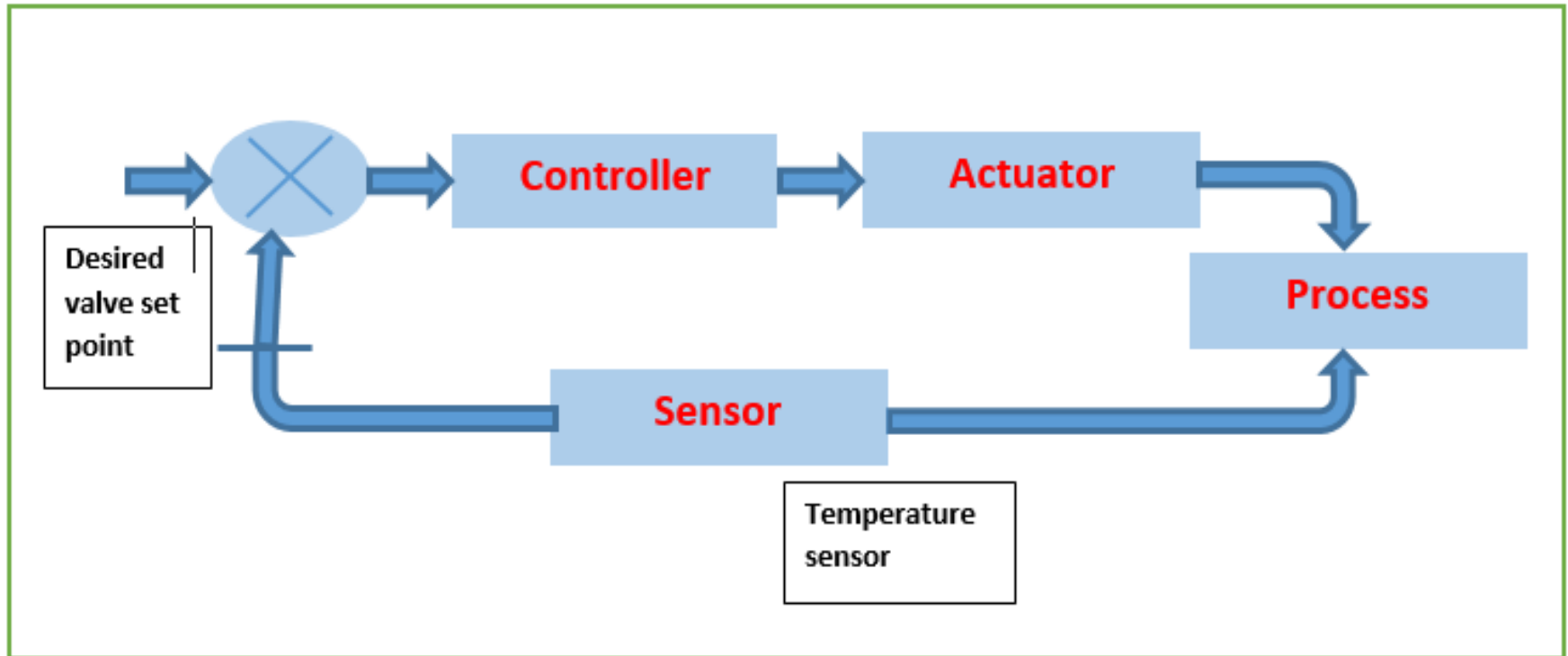
2019-2020	84,78,599
------------------	-----------

2020-2021	86,92,413
------------------	-----------

2021-2022	87,14,655
------------------	-----------



PID Logic controller for AHU Actuators



Proportional Integral Derivative Logic controller is implemented in the Air Handling Units . It Plays a great role in the energy efficient based chiller and Heat Ventilation Air Conditioning system operation.

ECM: Chiller Replacement



Units with old chiller

3286172

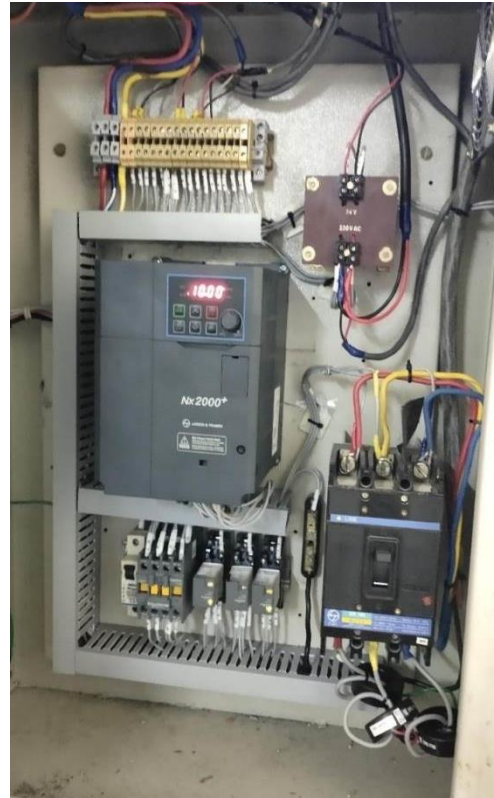
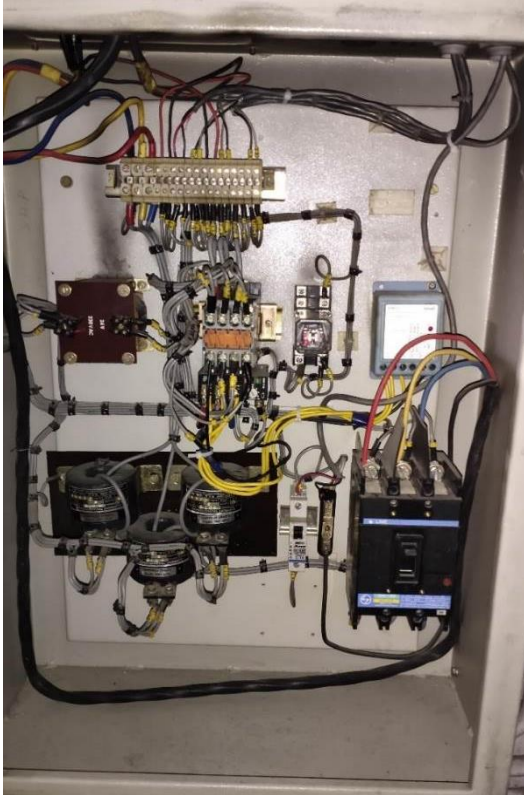
**Unit consumption with
energy efficient chiller**

3046592

Saving units /year

239580

VFD Installation



Actual consumption without vfd

1169569.5



Consumption after VFD installation

935655.5

Savings in KWH

233914

❖ Background

- ❖ The hotel has got HSD fired boiler of capacity 1.5TPH.
- ❖ HSD fired boilers are being used mainly to cater for the steam requirement of Laundry section.
- ❖ The operating cost of HSD fired boiler has become very high because of the increasing price of HSD.

❖ Solution

- ❖ The burners of HSD fired boiler is being converted to LPG.
- ❖ The operating cost of steam generation got reduced.
- ❖ The efficiency of the boiler has also increased because of this conversion since LPG is a much cleaner fuel as compared to HSD.

❖ Cost Benefit Analysis

- ❖ Investment: Rs.15 Lacs
- ❖ Savings : Rs.23.31 Lacs
- ❖ Payback : Less than a year.

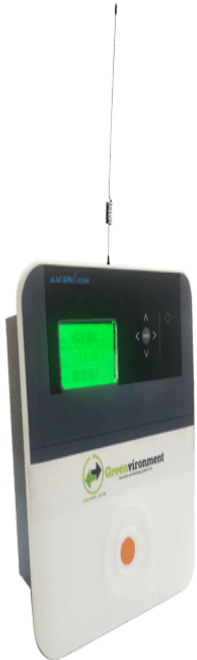




- ❖ Hotel is installed with Building Management system to control central Heating Ventilation Air-conditioning to provide comfortable environment with minimal human interventions.
- ❖ Hotel is also having energy monitoring system to monitor & control energy parameters on daily basis.

Sewage Treatment Plant (STP) online Monitoring system

RTM Hardware



Parameters

- ▶ pH
- ▶ Total Dissolved Solids - TDS
- ▶ Chlorine
- ▶ Biochemical Oxygen Demand - BOD
- ▶ Chemical Oxygen Demand - COD
- ▶ Total Suspended Solids - TSS
- ▶ Turbidity
- ▶ Oxidation & Reduction Potential - ORP
- ▶ Flow meters - Electromagnetic
- ▶ Pressure
- ▶ Temperature

RTM Software



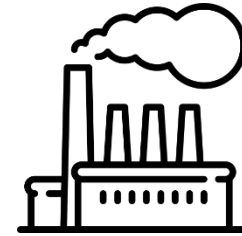
- 500 KLD Capacity Plant
- Extended Aeration process
- Real time monitoring and alert system helps to maintain the water parameters in limit
- The system is connected with the KSPCB

A new sustainable future for “world’s Top Hotel Brands – leading way for other hotels to follow.

Leading to
reduce



**Plastic
waste**



CO2 emission



Barrels of oil

Automatic tube cleaning system (Upcoming)

- ❖ Chemical free condenser tube cleaning process and hence environmentally friendly.
- ❖ No shut down/ downtime required.
- ❖ Saves Energy Consumption/ Input Power up to 30%.
- ❖ Increase in output up to 7%.



The Leela Palace Bengaluru – Awards and Accolades



The Leela Palace Bengaluru has been recognized as **Energy Efficient Unit** in the **building's category** by **CII 22nd National Awards for Energy Excellence held in August 2021.**

2020: THE LEELA PALACES, HOTELS AND RESORTS VOTED AS THE WORLD'S BEST HOTEL BRAND BY TRAVEL + LEISURE USA, READERS' AWARD SURVEY 2020

2019

Travel Leisure USA – Readers Choice Worlds Best Awards

Ranked #10 amongst the "Top 10 city hotels in Asia"

WOW Award Asia 2019

"Best venue for business events in Metro India"

2018

Travel Leisure USA Worlds Best Awards

Voted #7 in the 'Top 20 Hotel Brands in the World'

Preferred Hotel & Resorts

Hotel of the year India, Middle East & Africa

Zee Business Travel Awards

"Best Luxury Hotel" in India

2017

Travel + Leisure USA Worlds Best Awards

Top 15 Hotel Brands in the World

TripAdvisor2017 Travelers' Choice™ awards

Ranked #23 among "Top 25 Luxury Hotels of India"

CNT India's Top 100 Business Hotels

2016

National Energy Conservation Award

The Leela Palace Bengaluru, Hotel sector (5 star and above) category

Via Cisco Webex

Energy Efficient Unit

Kiran Ananth

The Leela Palace, New Delhi



22nd National Award for
Excellence in Energy Management

2021



Confederation of Indian Industry

+5



Thank You

mukesh.chandra@brookfieldproperties.com